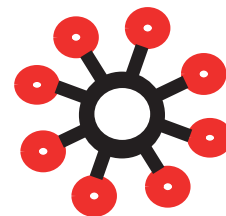


Resin Seeker

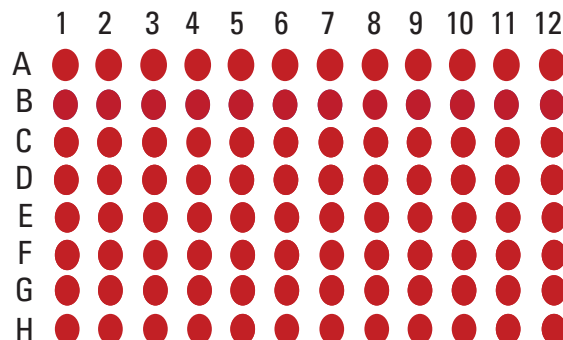
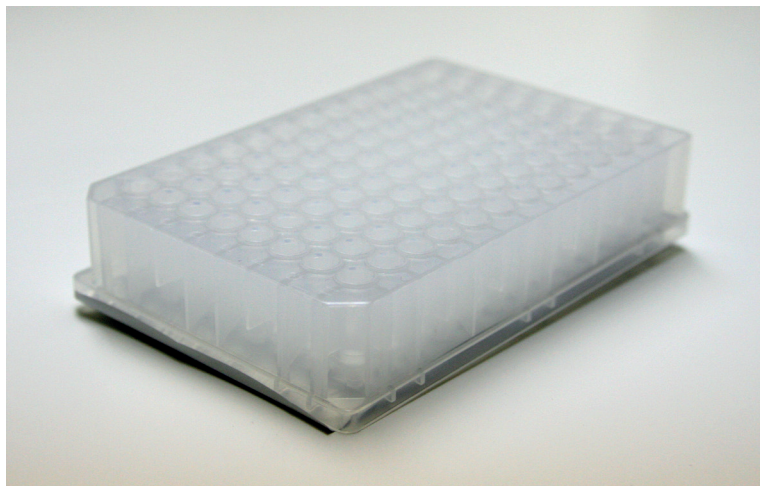
TOYOPEARL® NH₂-750F

96-well Plate Kit



P/N OC41MDNH2-750F

A method development kit for Salt Tolerant Anion Exchange Chromatography



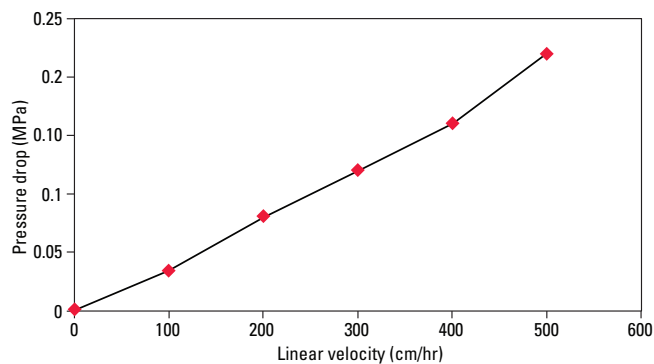
20 µL resin volumes

Each kit includes both
a collection and a wash plate.

TOYOPEARL NH₂-750F Resin Properties

Base bead	Polymethacrylic
Pore size (mean)	> 100 nm
Particle size (mean)	45 µm
Ion exchange capacity	0.07 - 0.10 eq/L
Static binding capacity	≥ 70 g/L
Pressure rating	0.3 MPa
pH stability	3-13

TOYOPEARL NH₂-750F Mechanical Stability



Resin: TOYOPEARL NH₂-750F
 Column size: 4.4 cm ID × 29 cm
 Mobile phase: 0.1 mol/L NaCl
 Flow rate: multiple

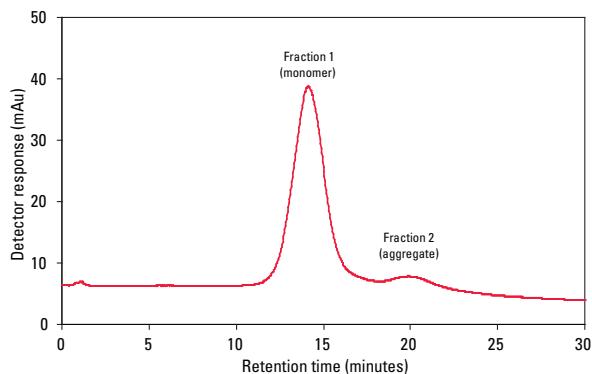
TOYOPEARL NH₂-750F Dynamic Binding Capacity

Buffer	Dynamic binding capacity for BSA (g/L)	
	TOYOPEARL Q-600C AR	TOYOPEARL NH ₂ -750F
20 mmol/L Tris-HCl (pH 8.0)	90	65
20 mmol/L Tris-HCl (pH 8.0) + 0.15 mol/L NaCl	27	46
20 mmol/L Tris-HCl (pH 7.5) + 0.15 mol/L NaCl	16	42
20 mmol/L Tris-HCl (pH 6.0) + 0.15 mol/L NaCl	11	38

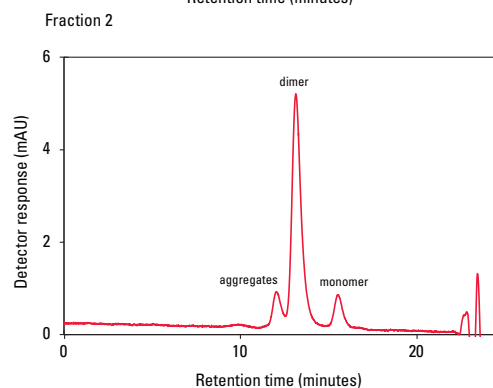
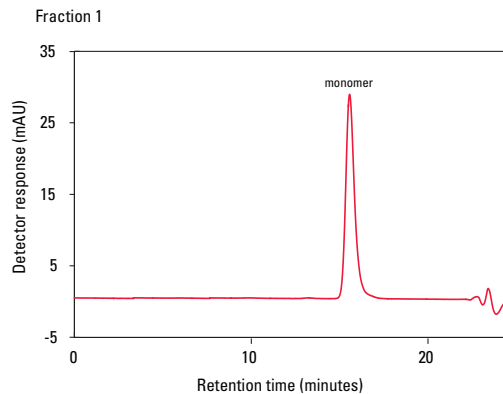
*Residence time; 1 min

Dynamic binding capacities were determined at 10% breakthrough.

TOYOPEARL NH₂-750F Performance



Resin: TOYOPEARL NH₂-750F
 Column: 5 mm ID × 5 cm (1 mL)
 Mobile phase: A. 20 mmol/L Tris-HCl, pH 8.0
 B. mobile phase A + 1 mol/L NaCl
 Gradient: 0 – 100% B (60 minutes)
 Flow rate: 300 cm/hr (1 mL/min)
 Detection: UV @ 280 nm
 Sample: mAb (IgG₁), 0.5 g/L



Column: TSKgel® G3000SW_{XL}, 7.8 mm ID × 30 cm
 Mobile phase: A. 0.1 mol/L sodium phosphate,
 0.2 mol/L arginine, pH 6.8
 Flow rate: 0.5 mL/min
 Detection: UV @ 280 nm
 Sample: fraction 1, mAb monomer peak
 fraction 2, mAb aggregate peak